



2022

ANNUAL REPORT



arcare

Planning today for your loved one's tomorrow



PO Box 12890
Overland Park, KS 66282



P 913.648.0233
F 913.648.0057



www.arcare.org

Table of Contents

4	Mission, Vision, Values Statements
6	Board of Directors
7	Letter from the Executive Director
9	2022 Highlights
11	Key Services
13	Charitable Fund Overview
15	Charitable Fund Highlight
15	Donate

A young man with dark hair, wearing a blue and white striped long-sleeved shirt and dark jeans, is watering plants in a garden. He is holding a green watering can and pouring water onto a plant. The background is a lush garden with various plants and trees.

Mission Statement

To provide caring and professional advocacy and program services to individuals with disabilities while assisting them in achieving their highest level of well-being.

Vision

- Arcare is committed to providing caring, planned, and professional support to individuals with disabilities throughout their lives.
- Arcare delivers exceptional, custom-tailored services and handles every situation with the utmost care and confidentiality.
- Arcare helps families feel confident knowing even when they are no longer able to provide support, their loved one will continue to be cared for and protected.

Values

- We believe individuals with disabilities have the right to live the highest quality of life and achieve the highest level of well-being and independence possible.
- We use a person-centered philosophy to emphasize the unique needs of each individual we serve.
- We believe an individual is more than their disability, and we are committed to respecting and recognizing the strengths of our clients, families, staff and community partners.
- We value financial transparency, accountability, innovation, and compassionate service.

Board of Directors

Thomas Olson, M.D.

Chairperson

Larry Glennemeier, CPA

Treasurer

Kathy Rodden

Secretary

Polly Blomquist, JD

Member

Ed Bowman

Member

Emily Donaldson, CELA

Member

Martha Fleming

Member

Michael Letourneau

Member

Amy O. Walters, JD

Member

Thomas R. Willy, JD

Member

A Letter from the Executive Director

This past year has been one to remember, as 2022 marked 40 years of service for Arcare. It is truly amazing what we have accomplished as an organization. Leading Arcare is a blessing to me. I am so fortunate to work with a dedicated board and a committed staff to ensure we meet the needs of and provide opportunities for the growing number of individuals we serve.

In this annual report, we celebrate the continued growth of Arcare and the strong impact our organization has had on the families, individuals, and the communities in which we serve. **In 2022, we increased our service capacity by 10%, meaning we now provide services to more than 2,000 individuals!**

I am also honored to share with you that in 2022, we provided more than \$196,000 in grants to individuals with disabilities in the community and organizations who serve individuals with disabilities. **This is a 77% increase from last year.** At Arcare, we believe individuals with disabilities have the right to live the highest quality of life and achieve the highest level of well-being and independence possible. Our charitable fund confirms this commitment, and your generous financial support of our organization ensures that we will continue to provide much-needed financial assistance to the most vulnerable individuals in our community.

As we celebrate and reflect on all we have achieved, we also look toward the future. Thank you to the individuals and families we serve, our loyal community partners, and to you for your continued commitment to our mission.

Sincerely,

Barb Helm

Barb Helm, LBSW
Executive Director
Arcare, Inc.



40th Anniversary Celebration

The year 2022 marked a significant milestone for Arcare, as we celebrated our 40th anniversary. On a cold, rainy night in November, we gathered with community members, friends, and family to celebrate this momentous occasion. We are so very grateful to True Link Financial for their sponsorship of the event. It was a wonderful time to reflect on Arcare's accomplishments throughout the last 40 years and look forward to what the next 40 years (and beyond!) will bring.



2022 Highlights

	Year 2017	Year 2022	Percent Growth
Trust Department			
Trust I	129	173	34.1%
Trust II	1031	1298	25.9%
Total	1160	1471	26.8%

Representative Payee			
	394	589	49.5%

Life Care Plan			
Plan Enrollment	30	62	106.7%
Guardianship	6	32	433.3%

	Year 2019	Year 2022	Percent Growth
Conservator			
	15	18	20.0%



Community Outreach and Engagement

Participated in:

- Stronger Together 2022, a Kansas legislative planning session hosted by KanCare Advocates Network in Topeka, KS
- A Person-Centered Approach to Care
- National Conference on Guardianship
- National Down Syndrome Congress Convention
- UT Law Special Needs Trust Conference
- National Plan Alliance Annual Conference

Presented at:

- Association on Aging with Development Disabilities (AADD) Conference | St Louis, MO
- Interhab Conference | Wichita, KS
- 2022 National Conference on Special Needs Planning and Special Needs Trusts | St. Petersburg, FL
- MoNAELA Winter Law Symposium
- Lakemary Family Association | Northeast Kansas
- Down Syndrome Innovations | Mission, KS

Exhibited at:

- Missouri Chapter of National Academy of Elder Law Attorneys 2022 Winter Elder Law Symposium St. Charles, MO
- Missouri Bar Estate, Trust & Elder Law Institute St. Louis, MO
- Interhab Conference Wichita, KS
- Autism Society's The Heartland 5k/1k Fun Run Kansas City, MO

Additional Community Outreach and Engagement

Increased social media presense by

77%

in 2022

Increased social media reach by

90%

in 2022

Increased social media followers by

156%

in 2022

Launched Arcare's YouTube channel, which showcases trainings and videos highlighting our services



Key Services

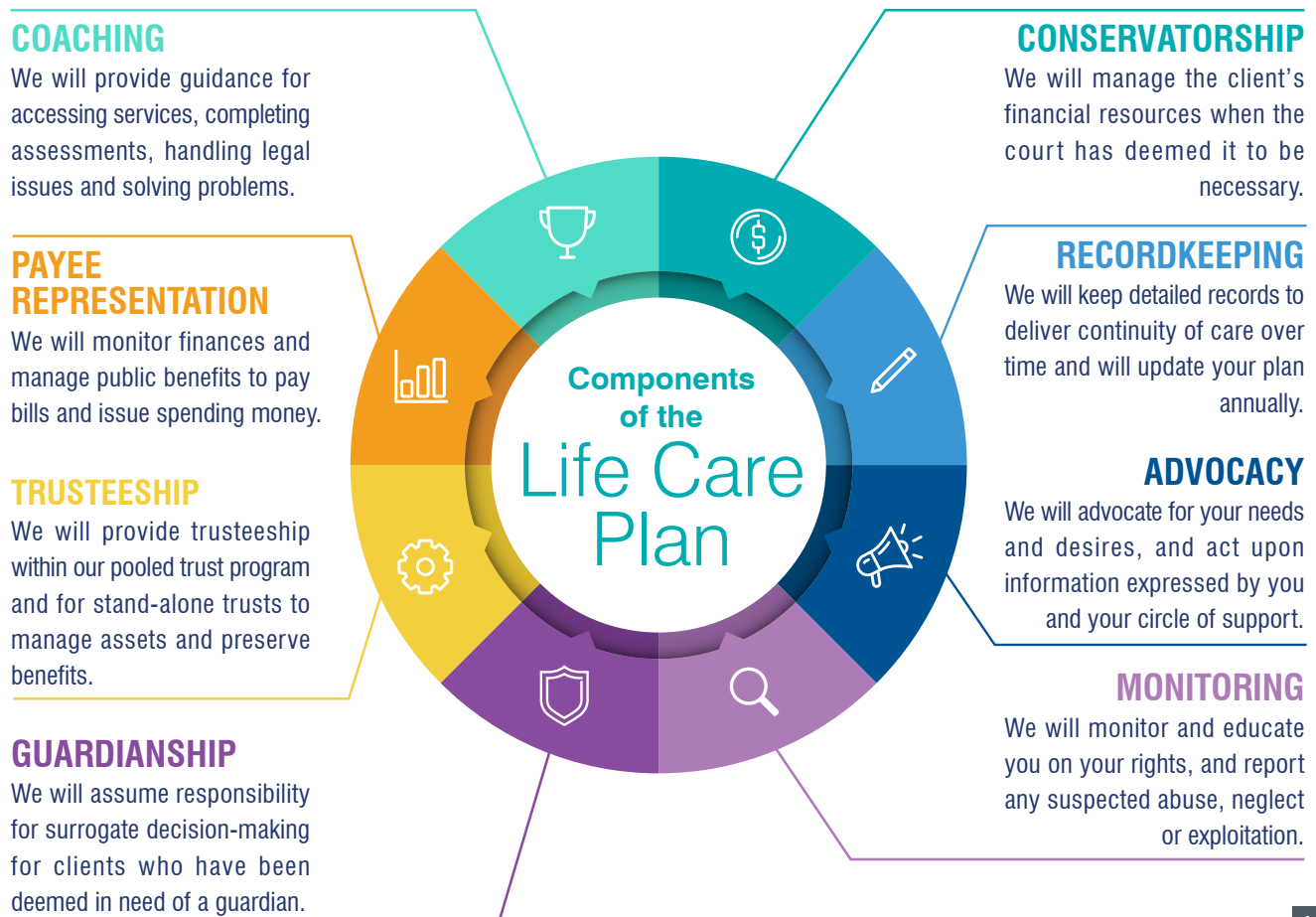
Since its inception, Arcare's focus has been to meet the evolving needs of families and individuals with disabilities. We understand that no two families, individuals with disability, or situations are alike, and we have created services that can be custom-tailored to individual's needs and family's desires.

Life Care Plan

The Life Care Plan utilizes a comprehensive questionnaire and extensive interview process to learn about the family and the individual's needs and preferences. After information is gathered, a document is formulated that guides the Arcare Team in providing advocacy and oversight to the individual. When used in partnership with the circle of support, the plan defines roles and responsibilities for supporting individuals' choices, identifying necessary legal and financial protections as well as living/work arrangements, community engagement, healthcare and many other aspects that help a person feel happy and secure. This living document is updated annually at minimum to accurately reflect life changes as they happen and contributes to the an ongoing stable presence as the individual ages.

The Components

The Life Care Plan consists of eight pillars that, when combined, can ensure your loved one will be cared for and protected while eliminating potential hard feelings and family conflict that could arise from the overwhelming responsibilities of ongoing care.



Guardianship

When an individual has been deemed in need of a guardian by the court, Arcare can assume responsibility for surrogate decision-making for the client. Oftentimes a parent or family member assumes the primary role of guardian for their loved one; however, in the event that the parent or family member is no longer able to serve in this capacity, Arcare can serve as Stand-by or Successor Guardian. This safeguard provides families peace of mind knowing that their loved one will continue receiving appropriate monitoring, advocacy, and support when family members can no longer manage alone or are unavailable.

Special Needs Trust Services

Ensuring a person with a disability has the financial resources required to meet his or her needs without jeopardizing their eligibility for government-provided benefits is challenging. Arcare serves as Trustee, providing oversight and monitoring of both individual Special Needs Trust and Sub-Accounts in our Pooled Trust. With more than 25 years of experience as a fiduciary, Arcare ensures money is protected and administered for the individual with a disability in a professional, caring, and cost-effective manner, while enhancing the lives of our beneficiaries. We handle the paperwork and disbursement of funds while staying current with issues facing persons with disabilities and rules affecting special needs trust administration. This frees family members from the consuming responsibility of being a money manager or trustee.



Conservatorship

When the court has decided an individual with a disability needs a conservator to manage their finances, it is often difficult for families to navigate on their own. The required accounting and reporting can be overwhelming and often require legal representation. Arcare serves as Conservator and provides proper oversight and management of the client's financial resources while alleviating the strain of this responsibility for the family. In addition, we assume the duty of reporting required by the court.

Representative Payee Services

As an organizational representative payee, we assist clients in managing funds received from Social Security or other benefits programs. We work with clients to develop a monthly budget and keep records of expenses. Our primary responsibilities are to use these funds to pay for the current and foreseeable needs of the beneficiary and properly save any benefits not necessary for meeting current needs. We file all required annual reports and receive regular audits. Our fee changes annually and is set and monitored by the Social Security Administration.

Charitable Fund Overview

At Arcare, part of our continuous outreach to the community includes using our charitable fund to provide grants to individuals with disabilities. Federal law allows Arcare to retain a percentage of funds from its first-party pooled trust (Trust II) upon death of beneficiaries to be used specifically for such charitable purposes.

These grants are then made available to individuals and families in the community that are affected by disability, or not-for-profit organizations that serve or support volunteer programs for persons with disabilities. Grant applications are reviewed and rated based on demonstrated need. The funding committee considers whether the goods and/or services requested are clearly defined and meet Arcare's Charitable funding guidelines.

Grant funding can be used for:

- Medical and dental care or equipment not covered by Medicare, Medicaid or private insurance
- Rehabilitation training, services, or devices not covered by Medicare, Medicaid, KVRs or private insurance
- Supplemental educational expenses
- Personal goods and services or equipment needed to enhance comfort and quality of life
- Transportation expenses for the individual applicant or for friends and relatives to visit the applicant
- Medical care including physician services, treatment and prescriptions
- Dental care and treatment
- Durable medical goods and equipment
- Shelter and utilities
- Deposits (must not be used for future rent payments)
- Auto and home repairs
- Goods, services and programs that promote wellness
- Goods or services that promote community integration



“The Arcare Charitable Fund helped my consumers to remain living independently in their homes.”

2022 Grant Funding By Category

Accessible Equipment	\$84,492.91
Appliance Purchase	\$3,227.07
Art Equipment	\$705.25
Auto Repairs/Maintenance	\$8,825.70
Caregiver Services	\$730.00
Clothing	\$365.62
Computer Equipment	\$4,621.40
Dental Expenses	\$32,457.00
Exercise Equipment	\$2,951.37
Eyeglasses	\$523.00
Funeral Expenses	\$480.96
Furniture	\$10,314.32
Home Accessibility Modifications	\$6,705.00
Household Items	\$5,281.82
Housing Expenses (Rent and Deposits)	\$13,097.10
Insurance Expenses	\$870.00
Medical Expenses	\$304.55
Recreational Activity Expenses	\$1,208.18
Travel Expenses	\$936.83
Utilities	\$1,876.86
Misc. Expenses	\$199.10
Moving Expenses	\$3,085.75
Four-Course Living	\$500.00
Pro-Bono Services Provided	\$12,712.77

2022 Total	\$196,472.56
-------------------	---------------------

Charitable Fund Highlight: A Ramp for Kristina

Kristina lives in her own home with her six -year-old adopted daughter but has weakness in the right side of her body because of her disability. She became eligible for a power wheelchair through the Kansas Medicaid Program; however, her home entrance has five stairs. Kristina required a ramp to be able to enter and exit her home safely, allowing her access to the community. Unfortunately, there were no local or state funds available to assist with the ramp.

With guidance from our community partners at Minds Matter and the Topeka Independent Living Resource Center, Kristina applied for funding from the Arcare Charitable Fund. We are so grateful that our community partners connected her to the Arcare and that we were able to provide the funding through our Charitable Program. Now Kristina can continue living safely and independently in her own home!



Donate

As a certified 501(c)(3) organization, we rely on considerate individuals with a kind heart and caring spirit to help further our mission. If you are able, we ask that you consider a one-time donation or a monthly pledge to support Arcare. All donations are tax deductible, and all funds are used directly to help us serve a growing population of individuals with disabilities.

Visit arcare.org/donate

or mail a check with “donation” in the memo line to: Arcare | PO Box 12890 | Overland Park, KS 66282

Thank you in advance for your continued support and generosity. We couldn't do it without you!



www.arcare.org

PO Box 12890 | Overland Park, KS 66282 | P 913.648.0233 | F 913.648.0057